

## First connection to Bluetooth

1. Turn speaker on
2. Choose BT on remote control
3. Search for BT device on smartphone
4. Choose SA air 1 or SA air 9
5. Notice welcoming sound
6. Speaker is connected

# Air





# Welcome

Thank you for choosing SA. At System Audio, we want to excite people with amazing audio experiences. To get the most out of your new speakers, I recommend that you carefully read this guide before connecting your new SA speakers. Feel free to contact us if you have any questions.

## Why Air is special

We love music and therefore we have a special focus on the sound. Air speakers are built of wood and the drive units are custom-designed to make the sound as life-like as possible. The Air technology consists of powerful digital amplifiers with built-in 32-bits floating point processors that deliver high quality sound in high resolution and without loss. This is all unique for speakers in this category.

Ole Witthøft, founder

## Inside the box

### SA air 1

- 1 x SA air 1
- 2 x front different grilles
- 1x White power cable (1.8m)
- 1 x remote control
- 2 x batteries
- 4 x rubber feet

### SA air 9

- 2 x SA air 9
- 2 x front grilles
- 1 x White power cable (1.8m)
- 1 x White interconnect cable (5.5m)
- 1 x remote control
- 2 x batteries
- 4 x rubber feet

## Good to know about your new speaker

### Warranty

System Audio A/S provides a 2-year warranty against production defects and a 7-year warranty on drive units by registration at [www.system-audio.com](http://www.system-audio.com)

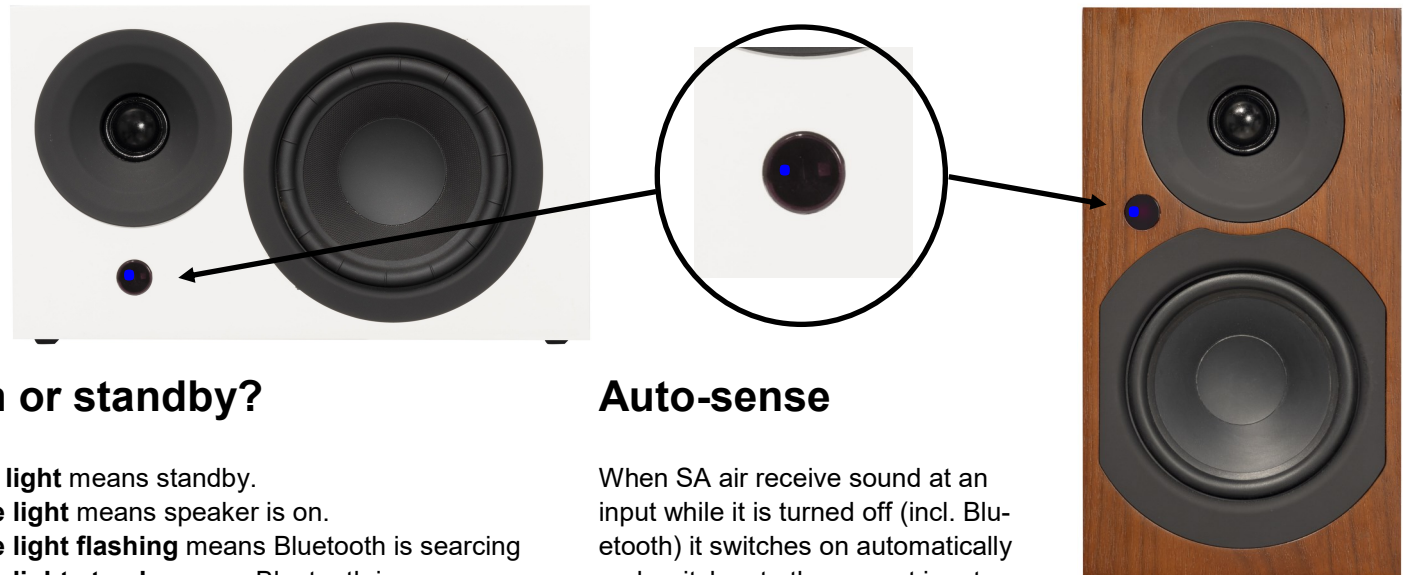
The warranty does not cover abuse or electronic circuits. Repairs and service are performed by the dealer or affiliated service workshops. Any changes to the design will void the warranty.

### Burning-in your new speaker

Your speaker need a 10 hour burn-in period and have to play music for a few days to get the sound right:

#### Note:

- \* Spend time experimenting with speaker placement
- \* Never turn up the volume to a level where the sound is not clean
- \* Remove front grilles for best sound



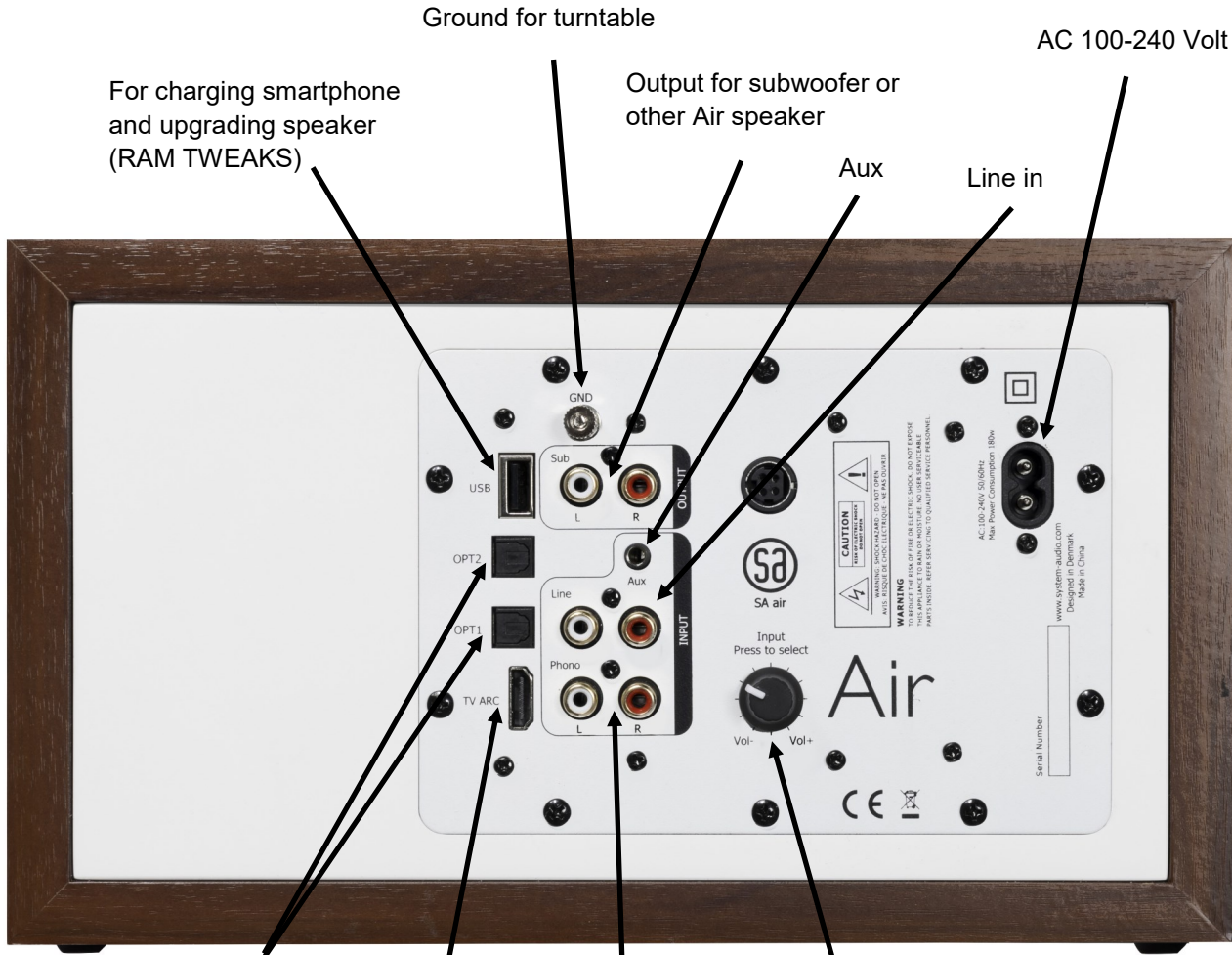
## On or standby?

- Red light** means standby.
- Blue light** means speaker is on.
- Blue light flashing** means Bluetooth is searching
- Blue light steady** means Bluetooth is connected.
- White light.** Speaker is using other input than Bluetooth

## Auto-sense

When SA air receive sound at an input while it is turned off (incl. Bluetooth) it switches on automatically and switches to the correct input.

# SA air 1



For charging smartphone and upgrading speaker (RAM TWEAKS)

Connect TV, CD, Blu-Ray or games console. Choose optical inputs for clear sound from digital media

Connect HDMI cable from TV

Ground for turntable

Output for subwoofer or other Air speaker

AC 100-240 Volt

Aux

Line in



Input for turntable (RIAA)

## Button with three functions

**Turn.** Increase or decrease sound volume.  
**Short click.** Switch between inputs.  
**Long click.** Turn speaker on or in standby.

On / Off

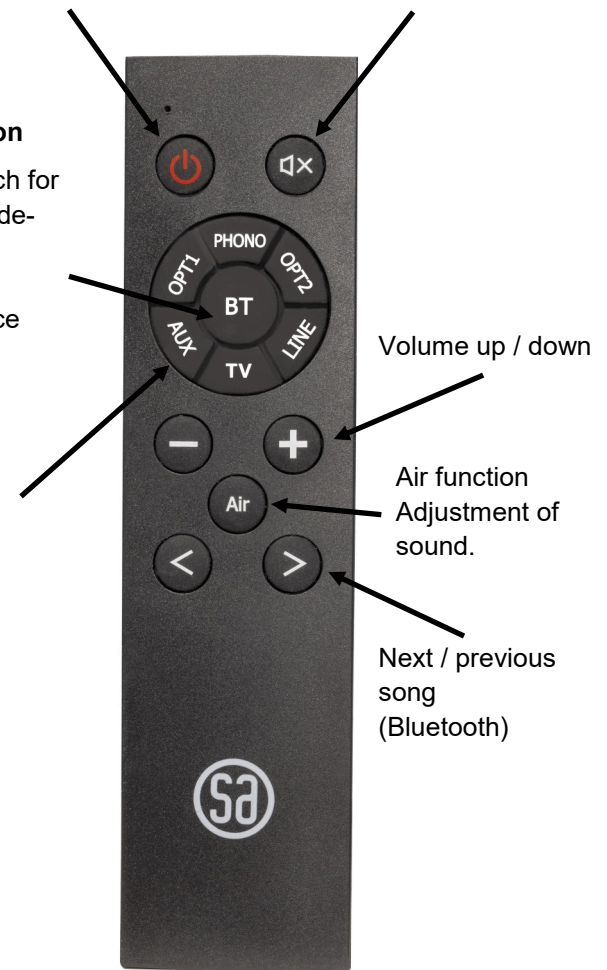
Mute

## Bluetooth button

Activate to search for other Bluetooth devices.  
 Long press = disconnect device

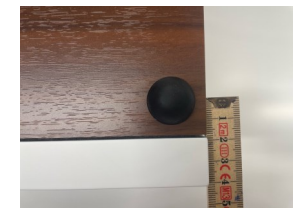
## Input options

Optical 1  
 Optical 2  
 Phono (RIAA)  
 TV  
 Line in  
 Aux



## Place rubber feet:

1.5 cm from sides  
 1.5 cm from back  
 4.0 cm from front



# SA air 9



Holes for wall bracket W.5

Connect TV, CD, Blu-Ray or games console. Choose optical inputs for clear sound from digital media

Connect HDMI cable from TV

For charging smartphone and upgrading speaker (RAM TWEAKS)

Input for turntable (RIAA)

Ground for turntable

Output for subwoofer or other Air speaker

Aux

Line in

AC 100-240 Volt

## Button with three functions

**Turn.** Increase or decrease sound volume.  
**Short click.** Switch between inputs.  
**Long click.** Turn speaker on or in standby.

On / Off

Mute

## Bluetooth button

Activate to search for other Bluetooth devices.  
 Long press = disconnect device

## Input options

Optical 1  
 Optical 2  
 Phono (RIAA)  
 TV  
 Line in  
 Aux

Volume up / down

Air function  
 Adjustment of sound.

Next / previous song (Bluetooth)

## How to install RAM TWEAKS (upgrades)

1. Download file from [system-audio.com](http://system-audio.com)
2. Save file on USB stick
3. Turn speaker on
4. Insert USB stick
5. Note green flashing light on speaker front
6. Wait for speaker to enter standby (red light on front)
7. Remove USB stick
8. Speaker is updated

